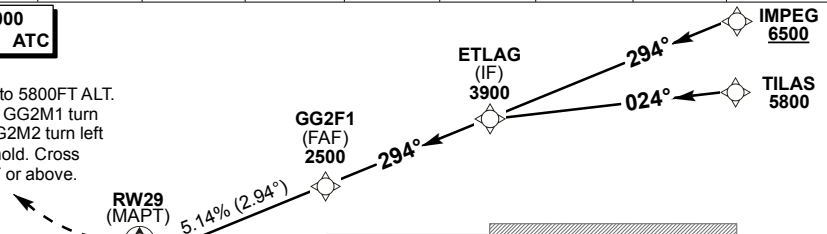


**TRANSITION ALT 8000**  
**TRANSITION LEVEL ATC**

**MISSED APPROACH:**  
 MAX 230KT IAS. Climb to 5800FT ALT.  
 Route direct GG2M1. At GG2M1 turn left direct GG2M2. At GG2M2 turn left direct TILAS and enter hold. Cross CTR BDRY 2500FT ALT or above.



NM to/from **THR RWY 29**  
 MINTEMP: 0°C; MAX TEMP: +70°C

Straight-in Approach	<b>OCA (H)</b>	<b>A</b>	<b>B</b>	<b>C</b>	<b>D</b>	<b>GS</b>	<b>KT</b>	80	100	120	140	160	
	LNAV	2.5%	1260 (612)	1260 (612)	1260 (612)	1260 (612)	FAF to MAPT	M:S	4:16	3:25	2:51	2:26	2:08
	VNAV	2.5%	1030 (382)	1030 (382)	1030 (382)	1030 (382)	Rate of descent	FPM	416	520	625	729	833
	RVR		1500m	1500m	1800m	2000m							
	ALS OUT		1500m	1500m	1800m	2000m							
Circling		Nil Circling											

- NOTE:**
- Rate of Descent is 5.14%.
  - Turns prior to MAPT prohibited.
  - Pilots to report any safety concerns or operational issues with regards to this procedure to ATC.
  - Nil Circling.

CHANGE: Profile view - MAPT renamed and TILAS ALT amended